

# The Role of Albumin to Globulin Ratio for Progression in Patients Underwent Active Surveillance for Prostate Cancer: Retrospective Cohort Analyses

## Prostat Kanseri Nedeniyle Aktif İzleme Alınan Hastalarda Albumin-Globulin Oranının Progresyondaki Rolü Retrospektif-Kohort Çalışma

<sup>1</sup>Levent ÖZCAN<sup>a</sup>, <sup>2</sup>Ömür MEMİK<sup>b</sup>, <sup>3</sup>Emre Can POLAT<sup>a</sup>, <sup>4</sup>Ahmet BOYLU<sup>a</sup>, <sup>5</sup>Alper ÖTÜNÇTEMUR<sup>a</sup>

<sup>a</sup>University of Health Sciences Faculty of Medicine, Prof. Dr. Cemil Taşcıoğlu City Hospital, Department of Urology, İstanbul, Türkiye

<sup>b</sup>University of Health Sciences Faculty of Medicine, Derince Training and Research Hospital, Department of Urology, Kocaeli, Türkiye

**ABSTRACT Objective:** In this study, we aimed to show whether albumin/globulin ratio (AGR) can predict progression in prostate cancer (pCA) patients in active surveillance (AS). **Material and Methods:** A retrospective analysis of data recorded in the electronic registration system of our hospital was conducted for patients who were under AS due to pCA between 2018 and 2022. The inclusion criteria for AS were as follows: prostate specific antigen (PSA) <10 ng/ml, Gleason score ≤6, clinical stage T1c-T2a, ≤2 positive cores and ≤50% tumour cells in each positive core. A programme of periodic clinical assessments was implemented for all patients, incorporating digital rectal examination and a PSA test on a quarterly basis for a period of 1 year. Following the conclusion of the initial year, a second biopsy was conducted on all patients. Patients were divided into 2 groups according to their progression status. AGR and other clinicopathological features were then compared between these groups. **Results:** Receiver operating characteristic analysis was used to determine the optimum AGR cut-off value predicting progression and this value was determined as 1.6. Utilising the 1.6 cut-off point, the sensitivity and specificity of AGR the predictive values for progression were found to be 90% and 62.6%, respectively. The multivariate analysis indicated that low AGR values and the number of cores were more effective in explaining the progression of the disease than the other parameters. **Conclusion:** We propose that AGR values should be incorporated into AS criteria, in addition to other established criteria.

**ÖZET Amaç:** Bu çalışmada, albümin/globulin oranının (AGR) aktif izlemdeki (Aİ) prostat kanseri (PK) hastalarında progresyonu öngörüp öngöremeyeceğini göstermeyi amaçladık. **Gereç ve Yöntemler:** 2018-2022 yılları arasında PK nedeniyle Aİ altında olan hastalar için hastanemizin elektronik kayıt sistemine kaydedilen verilerin retrospektif analizi yapıldı. Aİ dâhil etme kriterleri prostat spesifik antijen (PSA) <10 ng/ml, gleason skoru ≤6, klinik evre T1c-T2a, ≤2 kor pozitif ve her pozitif korda ≤%50 tümör hücresi olarak belirlendi. Tüm hastalar için 1 yıllık bir süre boyunca 3 ayda 1 dijital rektal muayene ve PSA testini içeren periyodik klinik değerlendirme programı uygulandı. İlk yılın tamamlanmasının ardından, tüm hastalara ikinci bir biyopsi yapıldı. Hastalar progresyon durumlarına göre 2 gruba ayrılmış ve AGR ve diğer klinikopatolojik özellikler gruplar arasında karşılaştırılmıştır. **Bulgular:** Progresyonu öngören optimal AGR kesme değerini belirlemek için alıcı işletim özelliği analizi kullanılmış ve bu değer 1,6 olarak belirlenmiştir. 1,6 kesme noktası kullanıldığında, AGR'nin progresyon için prediktif değerlerinin duyarlılığı ve özgüllüğü sırasıyla %90 ve %62,6 olarak bulunmuştur. Çok değişkenli analiz, düşük AGR değerlerinin ve kor sayısının hastalığın ilerlemesini açıklamada diğer parametrelere göre daha etkili olduğunu göstermiştir. **Sonuç:** Mevcut Aİ kriterlerine AGR eklenmesinin yararlı olacağını düşünüyoruz.

**Keywords:** Active surveillance; albumin; globulin; prostate cancer

**Anahtar Kelimeler:** Aktif izlem; albümin; globulin; prostat kanseri

### TO CITE THIS ARTICLE:

Özcan L, Memik Ö, Polat EC, Boylu A, Ötünçtemur A. The role of albumin to globulin ratio for progression in patients underwent active surveillance for prostate cancer: Retrospective cohort analyses. J Reconstr Urol. 2025;15(2):31-7.

**Correspondence:** Levent ÖZCAN

University of Health Sciences Faculty of Medicine, Prof. Dr. Cemil Taşcıoğlu City Hospital, Department of Urology, İstanbul, Türkiye

**E-mail:** drleventozcan@gmail.com



Peer review under responsibility of Journal of Reconstructive Urology.

**Received:** 21 Dec 2024

**Received in revised form:** 20 Feb 2025

**Accepted:** 05 Mar 2025

**Available online:** 28 Mar 2025

2587-0483 / Copyright © 2025 by Türkiye Klinikleri. This is an open access article under the CC BY-NC-ND license (<http://creativecommons.org/licenses/by-nc-nd/4.0/>).

Active surveillance (AS) is an option for patients with low-risk localized prostate cancer (pCA) because it can achieve similar results to radical prostatectomy or radiotherapy.<sup>1</sup> The fundamental objective of AS is to mitigate the occurrence of overtreatment, while ensuring the opportunity for curative treatment is not overlooked. The primary concerns in AS are the prevention of morbidity and comorbidities, and the maintenance of quality of life. A significant concern in AS is the upgrading of Gleason score (GSU), which consequently results in the delay of curative treatment.<sup>1</sup> GSU is a significant condition due to its association with elevated levels of biochemical recurrence, the potential for progression to systemic disease, and a low cancer-specific survival rate.<sup>2</sup> A preceding study demonstrated that up to 36% of patients who were categorised as low risk by prostate biopsy according to the prevailing AS criteria in fact exhibited high-grade disease following radical prostatectomy.<sup>3</sup> In order to address the discrepancy between the established criteria and the actual clinical outcomes, and to enhance the classification of pCA, there is a necessity for research to be conducted with a view to identifying new biomarkers.<sup>4</sup> It is hypothesised that, as a consequence of these studies, it may be feasible to identify patients with GSU earlier and more accurately.<sup>1</sup>

Systemic inflammatory status has been demonstrated to be a significant predictor of unfavourable outcomes in numerous types of cancer. A number of cytokines and mediators, which are produced as a secondary consequence of inflammation, have been observed to increase cell proliferation, invasion, and metastasis.<sup>5</sup> Serum albumin (A) and globulin (G) represent two of the most significant constituents of human serum proteins. They play pivotal roles in inflammatory responses.<sup>6</sup> A is also associated with systemic inflammation, although it is an indicator of nutritional status.<sup>7</sup> A low level of A in the blood has been linked to a lower chance of survival in patients with upper tract urothelial carcinoma.<sup>8</sup> Similarly, high levels of G in the blood are now seen as a sign of inflammation in cancer patients.<sup>9</sup> In view of the potential variability of A levels, which can be influenced by a variety of factors, including nutritional status and inflammation, there has been a concerted effort to

identify a more reliable biomarker. This objective has been realised through the calculation of the albumin-to-globulin ratio (AGR), which serves as an additional parameter indicative of the inflammatory state. Previous studies have indicated that an operative low serum AGR is associated with a poor prognosis in various human cancers.<sup>10-13</sup>

To date, researchers have focused on investigating the efficacy of AGR in predicting the prognosis for men with advanced pCA prior to treatment. However, there is currently a lack of evidence regarding the ability of AGR to predict the progression of patients with AS. Previous studies have suggested a potential association between low AGR levels at the time of the initial biopsy and subsequent progression in patients with AS. The present study aims to address these research questions in 2 ways. Firstly, it will examine whether AGR can be utilised to predict progression in AS patients in comparison with the current criteria. Secondly, it will explore whether AGR can be employed as a criterion for AS in this group of patients.

## MATERIAL AND METHODS

### STUDY DESIGN

Data from 121 patients who were under active surveillance between 2018 and 2022 were retrospectively analysed in this study.

### EVALUATION OF PATIENTS

The following data were collected and analysed from our hospital's electronic patient records: Prostate specific antigen (PSA) value before the 1<sup>st</sup> biopsy (PSA1) and the 2<sup>nd</sup> biopsy (PSA2), rectal examination results, clinical T stage status, maximum tumour length in one core and number of positive cores. A, G and total protein (TP) levels were recorded in addition to routine blood analyses.

A prostate biopsy is recommended when there are signs of problems during a digital rectal examination (DRE) and when the PSA level in the blood is above 2.5 ng/mL. Prior to undergoing the biopsy, all patients were subjected to a multiparametric magnetic resonance imaging (mpMRI) of the prostate. The initial biopsies were conducted under transrectal ultra-

sound, targeting peripheral zones with a minimum of 12 cores, and were also performed as magnetic resonance (MR) cognitive biopsies. Subsequent biopsies were undertaken as MR fusion biopsies. The evaluation of the first biopsy specimens was conducted by a different pathologist, while the second specimens were evaluated by the same pathologist. In accordance with the 2014 International Society of Urological Pathology (ISUP) Consensus Conference on Gleason Grading of Prostatic Carcinoma, both specimens were awarded the Gleason score (GS).<sup>14</sup> Although there are many different inclusion criteria for AS published in the literature we used Prostate Cancer Research International: Active Surveillance (PRIAS) study criterias for selecting patients for AS.<sup>15</sup> According to this, our criterias are include:  $GS \leq 6$ , clinical stage based on DRE of the prostate T1c-T2a,  $PSA \leq 10$  ng/mL,  $\leq 2$  positive cores, and PSA density (PSAD)  $\leq 0.2$  ng/mL. A programme of periodic clinical assessments was implemented for all patients, incorporating DRE and a PSA test on a quarterly basis for a period of 1 year. Following the conclusion of the initial year, a 2<sup>nd</sup> biopsy was conducted on all patients. The definition of progression was established as any alteration in the histological pattern observed on subsequent biopsies. For instance, a shift from Gleason ISUP 1 to 2 or 3 could be indicative of progression.<sup>16</sup> Patients with active autoimmune disease, chronic inflammatory disease or haematological disease and a history of concomitant secondary cancer, were excluded from the study.

The AGR was calculated using this formula: albumin/globulin. Patients were divided into two groups according to their progression status, and AGR and other clinicopathological features were then compared between these groups.

## STATISTICAL ANALYSES

The analysis was conducted utilising IBM SPSS Statistics 27.0 (SPSS Inc, Chicago, IL, USA). To ascertain the normality of numeric variables, the Kolmogorov-Smirnov test was employed. Numerical variables with a normal distribution were expressed as mean  $\pm$  standard deviation. Data exhibiting non-normal distribution were presented as median  $\pm$  in-

terquartile range (IQR). Categorical variables were presented as number and percent. The statistical analysis employed a range of tests, including the t-test, Mann-Whitney U test, and chi-square test. The prediction of progression cut-off value of AGR was determined with receiver operating characteristic (ROC) analyses. The effect of AGR, the number of cores and tumour length in one core on progression risk was calculated using logistic regression analyses. P values less than 0.05 were considered statistically significant.

## ETHIC

The study was compatible with the Helsinki Declaration for laws and regulations, good clinical practice, and ethical principles and was approved by the ethics committee of our hospital (date: November 14, 2022, no: 2022/326). Written informed consent was obtained from all participants.

## RESULTS

Progression was observed in a total of 20 (16.5%) patients. The mean age of patients with no progression was  $63.69 \pm 2.9$  years and for patients with progression were  $63.05 \pm 2.8$  years. There were no statistically significant differences between the groups ( $p=0.376$ ) (Table 1).

The median A level of patients demonstrating no progression was found to be 42 g/L (30-50), while the mean TP level was 67 g/L (44.4-81). In contrast, the median A levels in patients who exhibited progression were 39.5 g/L (28.7-46.9), while the median TP levels were 66.7 g/L (50.2-76). There was no clear difference in the groups when it came to A and TP ( $p=0.135$  and  $p=0.451$ , respectively). The median G levels were further analysed according to progression status, revealing a median value of 27.2 g/L (20.1-33) in patients who progressed, as compared to 24 g/L (13-32) in those who did not. A significant statistical distinction was observed between the 2 groups regarding G ( $p=0.001$ ). The mean AGR of the patients without progression was found to be 1.7 (SD=0.16), while the mean of the patients with progression was 1.4 (SD=0.18). This finding indicates a statistically significant difference between the groups in terms of mean AGR ( $p=0.001$ ), as illustrated in Table 1.

**TABLE 1: Group characteristics**

		Progression		p value
		Yes	No	
Age	(year)	63.05±2.8	63.69±2.9	0.376 <sup>a</sup>
Albumin	(g/L)	39.5 (28.7-46.9)	42 (30-50)	0.135 <sup>b</sup>
Globulin	(g/L)	27.2 (20.1-33)	24 (13-32)	0.001 <sup>b*</sup>
TP	(g/L)	66.7 (50.2-76)	67 (44.4-81)	0.451 <sup>b*</sup>
AGR		1.4±0.18	1.7±0.16	<b>0.001<sup>a*</sup></b>
PSA1	(ng/mL)	5.3 (3.5-8.4)	5.3 (3.3-9.6)	0.62 <sup>b</sup>
PSA2	(ng/mL)	5.8 (3.6-8.5)	5.5 (3-9.8)	0.82 <sup>b</sup>

<sup>a</sup>t-test; <sup>b</sup>Mann-Whitney U test; <sup>\*</sup>statistically significant (p<0.05); AGR: Albumin to globulin ratio; PSA: Prostate specific antigen; TP: Total protein

**TABLE 2: Parameters that affect progression**

		Progression		p value
		Yes	No	
PSAD (ng/mL <sup>2</sup> )		0.09 (0.06-0.2)	0.1 (0.05-0.2)	0.496 <sup>a</sup>
Length (cm)		2 (1.1-2.5)	1.6 (1-2.5)	0.01 <sup>a*</sup>
AGR	<1.6	18 (90 %)	28 (38.4%)	0.01 <sup>b*</sup>
	>1.6	2 (10 %)	73 (62.6%)	
T stage	T1c	9 (10.2 %)	79 (89.8%)	0.002 <sup>b*</sup>
	T2a	11 (33.3 %)	22 (66.7%)	
Number of core	1	9 (8.7 %)	94 (91.3%)	0.001 <sup>b*</sup>
	2	11 (61.1 %)	7 (38.9%)	

<sup>a</sup>Mann-Whitney U test; <sup>\*</sup>Chi-Square Test; <sup>\*</sup>statistically significant (p<0.05); PSAD: Prostate specific antigen density; AGR: Albumin to globulin ratio

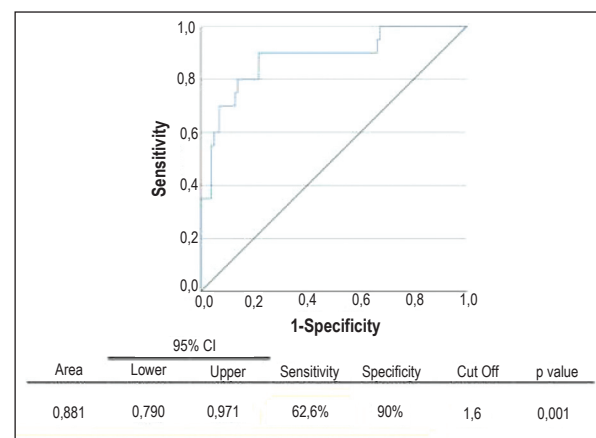
Median PSAD was 0.1 (0.05-0.2) for the patients without progression and 0.09 (0.06-0.2) for the patients with progression. The results demonstrate a clear progression, with no statistically significant differences observed in the PSAD (p=0.496). The median tumor length in one core was 1.6 (1-2.5) cm. for the patients without progression and 2 (1.1-2.5) cm. for the patients with progression. There were statistically significant differences in the tumor length between groups (p=0.001). When the T stage and the number of cores involved with cancer were examined in terms of progression, T stage and the number of cores involved with cancer had a statistically significant effect on progression. All parameters which effect progression showed in [Table 2](#).

The ROC curve was constructed to ascertain the distinctiveness of the AGR values in order to determine the progression. The area under the curve was found to be 0.881 (95% CI 0.790-0.971), indicating

statistical significance. The ROC analysis was then utilised to determine the optimal AGR cut-off value, which was established to be 1.6. ([Figure 1](#)). In the absence of progression in 28 patients (38.4%) with low AGR values (<1.6), progression was observed in 18 patients (90 %) (p=0.001). Utilising the 1.6 cut-off point, the sensitivity and specificity of AGR the predictive values for progression were found to be 90% and 62.6 %, respectively ([Figure 1](#)).

There was no significant difference between the PSA1 and PSA2 levels in the groups that did and did not progress (p=0.62 and 0.82, respectively). However, a discrepancy was observed between the 2 PSA measurements in the progression group when the groups were evaluated within themselves (p=0.007 and 0.437, respectively). Of the 20 patients demonstrating progression, 16 exhibited higher PSA2 levels in comparison to PSA1 ([Table 3](#)).

Univariate analysis was conducted to ascertain the impact of various factors on tumour progression. The findings revealed that low AGR values, the number of cores involved, T stage and the length of the tumour in one core were significantly associated with



**FIGURE 1:** Determination of the cut of value predicting progression by receiver operating characteristic analysis. CI: Confidence interval.

**TABLE 3: PSA variation within groups**

	PSA 1 (ng/mL)	PSA 2 (ng/mL)	p value
Progression group	5.3 (3.5-8.4)	5.8 (3.6-8.5)	0.007 <sup>a*</sup>
Non-progression group	5.3 (3.3-9.6)	5.5 (3-9.8)	0.437 <sup>a</sup>

<sup>a</sup>Wilcoxon signed rank test; <sup>\*</sup>statistically significant (p<0.05); PSA: Prostate specific antigen

**TABLE 4:** Results of the logistic regression analyses

	Univariate				Multivariate			
	p value	OR	95% CI		p value	OR	95% CI	
			Lower	Upper			Lower	Upper
T stage <sup>a</sup>	0.004*	4.389	1.615	11.926	0.053	4.296	0.982	18.799
Length	0.021*	3.980	1.237	12.803	0.053	5.370	0.975	29.557
Number of core <sup>b</sup>	0.001*	16.413	5.101	52.809	0.001*	18.625	3.262	106.343
AGR<1.6 <sup>c</sup>	0.001*	23.464	5.109	107.763	0.001*	36.985	5.553	246.348

<sup>a</sup>ref T1c; <sup>b</sup>ref one core; <sup>c</sup>ref AGR>1.6; \*statistically significant (p<0.05); AGR: Albumin to globulin ratio; CI: Confidence interval

progression. Low AGR (<1.6) was found to be a more effective indicator of progression than the length and T stage, but similar to the number of cores. The multivariate analysis indicated that low AGR values and the number of cores were more effective in explaining the progression of the disease than the other parameters. The findings of this study indicate that low AGR values (less than 1.6) are more effective in predicting disease progression than the number of cores (Table 4).

## DISCUSSION

The present study demonstrated that AGR has the capacity to function as a valuable predictive instrument in determining progression in patients with AS. According to the results obtained, before the initial biopsy, AGR<1.6 was a predictor of progression. A review of the extant literature reveals that AS studies are predominantly grounded in pathological evaluation following radical prostatectomy.<sup>17</sup> The present study will be the first to investigate the effect of AGR on progression in patients under AS who did not undergo radical prostatectomy.

Recent advancements in the field of cancer biology have elucidated a correlation between systemic malnutrition and inflammation with unfavourable prognoses in cancer cases.<sup>18,19</sup> In the process of inflammation, there is an observed decrease in serum A levels, whilst G levels increase. Given that albumin levels can be low due to nutritional status outside of the inflammatory response, it was hypothesised that the AGR would be a more effective indicator of inflammation.<sup>20,21</sup> The present study lends support to this hypothesis. In this study, G levels were found to

be higher in the group with progression compared to the group without progression, while A levels decreased in the group with progression. However, no statistical significance was observed. However, when AGR levels were analysed, a significant difference was found between the 2 groups.

The predictive role of AGR in pCA has been the subject of investigation in several studies. The majority of these studies were conducted in cases of advanced pCA.<sup>22,23</sup> The findings of these studies demonstrated that diminished AGR levels were associated with diminished cancer-specific survival (CSS), progression-free survival and earlier incidence of biochemical recurrence. Furthermore, Wang et al. demonstrated that AGR retained its efficacy in predicting CSS, irrespective of albumin levels. This finding corroborates the hypothesis that AGR exhibits an advantage over either parameter alone in demonstrating inflammation. Chung et al. evaluated the use of AGR in predicting gleason score up-grading in patients with organ-confined prostate cancer.<sup>24</sup> The study demonstrated that men who had low AGR before treatment had worse results, including nonconfined disease ( $\geq$ pT3) and a high pathologic Gleason score ( $\geq$ 8). In the present study, low AGR was demonstrated to predict progression, a finding that aligns with the study conducted by Chung et al. Our study suggests that it would be better to choose active treatment instead of AS in patients with low AGR.

As a secondary objective of this study, regression analyses were conducted to ascertain the contribution of low AGR in predicting progression and to ascertain the feasibility of incorporating AGR into



the AS criteria. To this end, univariate and multivariate regression analyses were performed for T stage, number of involved cores, tumour length in a cord and AGR univariate and multivariate regression analyses. The findings of the regression analysis demonstrated that low AGR values were superior in predicting progression compared with other parameters.

The present study has some restricted. Firstly, the number of patients included was comparatively small. Secondly, the study was retrospective in nature. Furthermore, the fact that the initial prostate biopsy specimens were evaluated by a number of different pathologists may have resulted in a low GS. The low staging probability at the beginning may have resulted in a high progression rate. It is important to note that, due to the retrospective nature of this study, there is a possibility of selection bias. Therefore, it is essential to exercise caution when evaluating the results. Notwithstanding these restrictions, we did not consider our findings to be inconsistent with the current literature explaining the link between inflammation and cancer.

## CONCLUSION

In this study, we show that low levels of AGR are a significant predictor of progression in patients with AS. Based on our results we can say low AGR can re-

flect the status of immune inflammation and can act as a indicator for AS. Consequently, we propose that AGR values should be incorporated into AS criteria, in addition to other established criteria. If our results are confirmed by further studies, pre-treatment AGR could be considered a commonly able to be used, affordable, objectively measurable, and avert reproducible biomarker. In this case, it may be beneficial in terms of accurately defining the AS patient groups.

## Source of Finance

*During this study, no financial or spiritual support was received neither from any pharmaceutical company that has a direct connection with the research subject, nor from a company that provides or produces medical instruments and materials which may negatively affect the evaluation process of this study.*

## Conflict of Interest

*No conflicts of interest between the authors and / or family members of the scientific and medical committee members or members of the potential conflicts of interest, counseling, expertise, working conditions, share holding and similar situations in any firm.*

## Authorship Contributions

**Idea/Concept:** Levent Özcan, Ömür Memik; **Design:** Emre Can Polat; **Control/Supervision:** Alper Ötünçtemur; **Data Collection and/or Processing:** Ahmet Boylu; **Analysis and/or Interpretation:** Levent Özcan; **Literature Review:** Ömür Memik; **Writing the Article:** Levent Özcan; **Critical Review:** Alper Ötünçtemur; **Emre Can Polat; References and Fundings:** Ahmet Boylu.

## REFERENCES

1. Hamidi N, Atmaca AF, Canda AE, Keske M, Ardiçoğlu A. Does extent of prostate-specific antigen fluctuation can predict Gleason score upgrading in low-risk prostate cancer patients? Turk J Urol. 2019;45(Suppl. 1):S42-S48. [PubMed] [PMC]
2. Boorjian SA, Karnes RJ, Crispen PL, Rangel LJ, Bergstralh EJ, Sebo TJ, et al. The impact of discordance between biopsy and pathological Gleason scores on survival after radical prostatectomy. J Urol. 2009;181(1):95-104; discussion 104. [PubMed]
3. Kim HL, Li P, Huang HC, Deheshi S, Marti T, Knudsen B, et al. Validation of the Decipher Test for predicting adverse pathology in candidates for prostate cancer active surveillance. Prostate Cancer Prostatic Dis. 2019;22(3):399-405. [PubMed] [PMC]
4. Bastian PJ, Carter BH, Bjartell A, Seitz M, Stanislaus P, Montorsi F, et al. Insignificant prostate cancer and active surveillance: from definition to clinical implications. Eur Urol. 2009;55(6):1321-30. [PubMed]
5. Mantovani A, Allavena P, Sica A, Balkwill F. Cancer-related inflammation. Nature. 2008;454(7203):436-44. [PubMed]
6. Meyer EJ, Nenke MA, Rankin W, Lewis JG, Torpy DJ. Corticosteroid-binding globulin: a review of basic and clinical advances. Horm Metab Res. 2016;48(6):359-71. [Crossref] [PubMed]
7. McMillan DC, Watson WS, O'Gorman P, Preston T, Scott HR, McArdle CS. Albumin concentrations are primarily determined by the body cell mass and the systemic inflammatory response in cancer patients with weight loss. Nutr Cancer. 2001;39(2):210-3. [PubMed]
8. Ku JH, Kim M, Choi WS, Kwak C, Kim HH. Preoperative serum albumin as a prognostic factor in patients with upper urinary tract urothelial carcinoma. Int Braz J Urol. 2014;40(6):753-62. [Crossref] [PubMed]
9. Lv GY, An L, Sun XD, Hu YL, Sun DW. Pretreatment albumin to globulin ratio can serve as a prognostic marker in human cancers: a meta-analysis. Clin Chim Acta. 2018;476:81-91. [PubMed]
10. Azab B, Kedia S, Shah N, Vonfrolio S, Lu W, Naboush A, et al. The value of the pretreatment albumin/globulin ratio in predicting the long-term survival in colorectal cancer. Int J Colorectal Dis. 2013;28(12):1629-36. [PubMed]

11. Azab BN, Bhatt VR, Vonfrolio S, Bachir R, Rubinshteyn V, Alkaied H, et al. Value of the pretreatment albumin to globulin ratio in predicting long-term mortality in breast cancer patients. *Am J Surg.* 2013;206(5):764-70. [\[PubMed\]](#)
12. Du XJ, Tang LL, Mao YP, Sun Y, Zeng MS, Kang TB, Jia WH, Lin AH, Ma J. The pretreatment albumin to globulin ratio has predictive value for long-term mortality in nasopharyngeal carcinoma. *PLoS One.* 2014;9(4):e94473. [\[Crossref\]](#) [\[PubMed\]](#) [\[PMC\]](#)
13. Duran AO, Inanc M, Karaca H, Dogan I, Berk V, Bozkurt O, et al. Albumin-globulin ratio for prediction of long-term mortality in lung adenocarcinoma patients. *Asian Pac J Cancer Prev.* 2014;15(15):6449-53. [\[PubMed\]](#)
14. Epstein JI, Egevad L, Amin MB, Delahunt B, Srigley JR, Humphrey PA; Grading Committee. The 2014 International Society of Urological Pathology (ISUP) Consensus Conference on Gleason Grading of Prostatic Carcinoma: definition of grading patterns and proposal for a new grading system. *Am J Surg Pathol.* 2016;40(2):244-52. [\[PubMed\]](#)
15. Bokhorst LP, Valdagni R, Rannikko A, Kakehi Y, Pickles T, Bangma CH, et al; PRIAS study group. A decade of active surveillance in the PRIAS study: an update and evaluation of the criteria used to recommend a switch to active treatment. *Eur Urol.* 2016;70(6):954-60. [\[PubMed\]](#)
16. Sotomayor PC, Aguilar JC, Mujica K, Zúñiga A, Godoy AS, Smith GJ, et al. Active surveillance in prostate cancer: current and potentially emerging biomarkers for patient selection criteria. *Urol Int.* 2022;106(12):1201-13. [\[Crossref\]](#) [\[PubMed\]](#)
17. Merder E, Ariman A, Bozkurt M, Can O, Abay E, Culha MG, et al. Predictive factors of pathological upgrading in prostate cancer patients treated by radical prostatectomy who are suitable for active surveillance. *J Reconstr Urol.* 2021;11(3):103-10 [\[Crossref\]](#)
18. Song W, Tian C, Wang K, Zhang RJ, Zou SB. Preoperative platelet lymphocyte ratio as independent predictors of prognosis in pancreatic cancer: A systematic review and meta-analysis. *PLoS One.* 2017;12(6):e0178762. [\[Crossref\]](#) [\[PubMed\]](#) [\[PMC\]](#)
19. Chung JW, Park DJ, Chun SY, Choi SH, Lee JN, Kim BS, et al. The prognostic role of preoperative serum albumin/globulin ratio in patients with non-metastatic renal cell carcinoma undergoing partial or radical nephrectomy. *Sci Rep.* 2020;10(1):11999. [\[Crossref\]](#) [\[PubMed\]](#) [\[PMC\]](#)
20. Liu J, Dai Y, Zhou F, Long Z, Li Y, Liu B, et al. The prognostic role of preoperative serum albumin/globulin ratio in patients with bladder urothelial carcinoma undergoing radical cystectomy. *Urol Oncol.* 2016;34(11):484.e1-484.e8. [\[Crossref\]](#) [\[PubMed\]](#)
21. Ye J, Tang C, Wu R, Tang Y, Yin H, Bai Y, et al. Preoperative blood-based nutritional biomarkers as significant prognostic factors after intravesical BCG therapy in patients with non-muscle-invasive bladder cancer. *World J Urol.* 2024;42(1):428. [\[Crossref\]](#) [\[PubMed\]](#)
22. Wang N, Liu JY, Li X, Deng MH, Long Z, Tang J, et al. Pretreatment serum albumin/globulin ratio as a prognostic biomarker in metastatic prostate cancer patients treated with maximal androgen blockade. *Asian J Androl.* 2019;21(1):56-61. [\[Crossref\]](#) [\[PubMed\]](#) [\[PMC\]](#)
23. Quhal F, Pradere B, Sari Motlagh R, Mori K, Laukhina E, Aydh A, et al. Prognostic value of preoperative albumin to globulin ratio in patients treated with salvage radical prostatectomy for radiation recurrent prostate cancer. *Minerva Urol Nephrol.* 2021;73(5):610-5. [\[Crossref\]](#) [\[PubMed\]](#)
24. Chung JW, Ha YS, Kim SW, Park SC, Kang TW, Jeong YB, et al. The prognostic value of the pretreatment serum albumin to globulin ratio for predicting adverse pathology in patients undergoing radical prostatectomy for prostate cancer. *Investig Clin Urol.* 2021;62(5):545-52. [\[Crossref\]](#) [\[PubMed\]](#) [\[PMC\]](#)