

## FDG PET/CT Negative Medullary Thyroid Carcinoma Patient with Elevated CEA Level: Case Report and Review of Literature

### FDG PET/BT Negatif Yükselmiş CEA Değerleri Olan Medüller Tiroid Karsinomu Hastası; Olgu Sunumu ve Literatür Derlemesi

Zehra Pınar KOÇ,<sup>a</sup>  
Kader UĞUR AKSOY,<sup>b</sup>  
Erol KELEŞ,<sup>c</sup>  
Ferda DAĞLI,<sup>d</sup>  
Yavuz NARİN<sup>e</sup>

<sup>a</sup>Department of Nuclear Medicine,  
Mersin University Faculty of Medicine,  
Mersin

Departments of

<sup>b</sup>Endocrinology,

<sup>c</sup>Ear Nose and Throat,

<sup>d</sup>Pathology,

Firat University Faculty of Medicine,

<sup>e</sup>Nuclear Medicine Clinic,

Medical Park Hospital,  
Elazığ

Geliş Tarihi/Received: 06.10.2016

Kabul Tarihi/Accepted: 14.02.2017

Yazışma Adresi/Correspondence:

Zehra Pınar KOÇ

Firat University Faculty of Medicine,

Department of Nuclear Medicine, Elazığ,

TURKEY/TÜRKİYE

zehrapinarkoc@gmail.com

**ABSTRACT** The tumor markers are considered reliable in follow up of Medullary Thyroid carcinoma (MTC) as an adjunct with other imaging methods like ultrasonography. In some circumstances imaging of thorax or whole body imaging may be necessary in these patients in the follow up. Calcitonin levels in combination with carcinoembryonic antigen is markers that we use in the follow up of MTC patients which elevation indicates recurrence and the recurrence cite may be described by means of Fluorine-18 Fluorodeoxyglucose Positron Emission Tomography/Computed Tomography (F-18 FDG PET/CT) imaging which was negative in our case. In this case we report a patient with exceptionally high carcinoembryonic antigen (CEA) and low calcitonin level in one month postoperative follow up who was diagnosed as having false positive CEA elevation and discuss the diagnostic methods and tumor markers in detection of the Medullary Thyroid carcinoma.

**Keywords:** Fluorodeoxyglucose F18; positron-emission tomography; carcinoembryonic antigen; thyroid cancer, medullary; calcitonin

**ÖZET** Tümör göstergeleri medüller tiroid karsinomu hastalarında diğer ultrasonografi gibi görüntüleme metodlarına ek olarak güvenilir olduğu kabul edilerek kullanılmaktadır. Bazı durumlarda bu hastalarda takipte toraks ve tüm vücut görüntüleme de gerekli olabilir. Kalsitonin ve karsinoembriyonik antijen birlikte medüller tiroid karsinomu takibinde güvenilir olarak kullanılır ve yükselmeleri nüksü gösterir ve rekürrens alanı F-18 FDG PET/BT gibi tetkiklerle tanımlanabilir ki bizim hastamızda bu negatif idi. Biz bu vaka ile nadiren görülen düşük kalsitonin düzeyine karşılık yüksek karsinoembriyonik antijen yüksekliği ile tanı alan yanlış CEA pozitifliğini raporluyor ve medüller tiroid karsinomunda tanısal metodlar ile tümör göstergelerinin yerini tartışıyoruz.

**Anahtar Kelimeler:** Fluorodeoksiglukoz F18; pozitron emisyon tomografi; karsinoembriyonik antijen; medüller tiroid kanseri; kalsitonin

Recurrent or metastatic medullary thyroid carcinoma (MTC) is usually presents with high calcitonin and carcinoembryonic antigen (CEA) as well. There is some several case reports in the literature incidentally firstly recognized with Fluorine-18 Fluorodeoxyglucose Positron Emission Tomography/Computed Tomography (F-18 FDG PET/CT) with suspicion of elevated CEA levels with metachronous colon carcinoma.<sup>1,2</sup> Elevated tumor markers (calcitonin and CEA) usually refer to either metastasis or recurrence in patients with MTC. There are several imaging methods in identification of recurrence or metastasis in these kinds of patients which are conventional morphological imaging methods which do not yield a high

accuracy and sensitivity and several Nuclear Medicine methods. These methods are DMSA V scintigraphy, F-18 FDG PET, F-18 DOPA PET and peptide receptor imaging. The latest studies have shown that the F-DOPA PET might show the extent of disease most accurately and F-18 FDG PET shows more aggressive lesions of patients with higher marker levels and lower marker doubling times and receptor scintigraphies may be considered for decision of treatment.<sup>3-5</sup> Among this nuclear medicine imaging methods previous studies have pointed that F-18 FDG PET might be more helpful in patients with elevated or unstable CEA doubling time rather than elevated calcitonin levels.<sup>2,6</sup> However there is no report of a similar case with isolated CEA elevation with normal calcitonin levels. We wanted to present F-18 FDG PET results of a case with MTC and only CEA elevation.

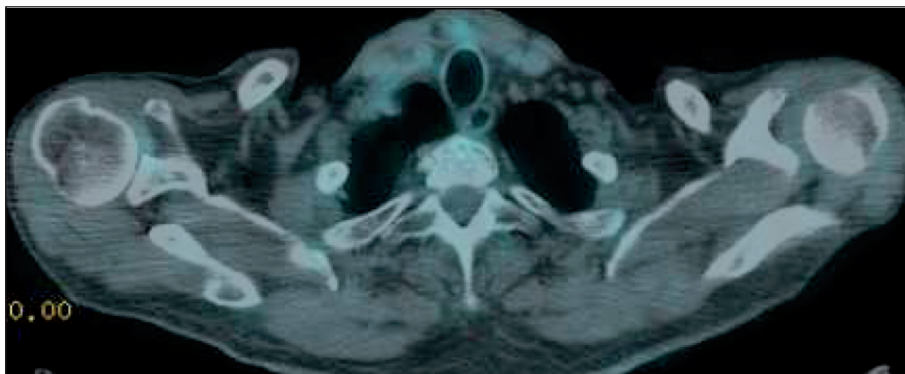
## CASE REPORT

A seventy three years old male patient who has history of diabetes mellitus and hypertension attended hospital for complaint of tinnitus. He had a thyroid nodule in physical examination and underwent bilateral total thyroidectomy operation due to suspicion of malignancy in fine needle aspiration result (suspicion of papillary carcinoma follicular variant). Postoperative pathology results revealed medullary thyroid carcinoma in the right lobe (3 cm in size) confined to the lobe without any finding of invasion. One month after the operation he had persistent CEA levels 40 ng/mL (1-5

ng/mL:normal limits) despite low calcitonin levels. Further diagnostic work-up by F-18 FDG PET revealed focal small area with increased uptake adjacent to trachea in the midline of the neck with SUVmax level of 2.6 indicating inflammatory changes due to operation otherwise normal (Figure 1). Although there was no metastatic lymph node involvement in the pathology results the control CEA levels were completely decreased (1,62 ng/mL) after two months from the operation. According to preoperative results prior to the first surgery it was indicated that the patient had mild uremia (58 mg/dL) probably because of diabetes mellitus. After three months follow up the plasma CEA and calcitonin levels were in normal range and neck ultrasound was normal.

## DISCUSSION AND LITERATURE REVIEW

The MTC is one of the neuroendocrine tumors (NET's). The identification and detection of NET's consist different imaging modalities like previously I-131 MIBG, Tc-99m V DMSA and recently somatostatine receptor imaging, anti-CEA antibody imaging and F-18 DOPA PET imaging.<sup>7</sup> In a review it has been highlighted that Tc-99m V DMSA imaging considered the most sensitive, MIBG most specific method additionally MIBG or SR imaging serves for therapeutic considerations.<sup>8</sup> Also FDG PET may provide prognostic information about bad prognosis and SR imaging about better prognosis.<sup>8</sup> FDG PET has acceptable sensitivity especially for detection of metastatic lymph nodes and according



**FIGURE 1:** Transaxial fusion image of F-18 FDG PET/CT from the neck region; slight activity accumulation in thyroid bed indicating inflammatory changes due to recent surgery.

to a review analysis has the highest sensitivity compared to the other imaging methods.<sup>9,10</sup> However in a previous study post-RIT (anticarcinoembryonic antigen pretargeted radioimmunotherapy) scintigraphy has been considered more sensitive compared to FDG PET.<sup>11</sup> FDG PET is a valuable tool in the identification of occult residual or metastatic disease and guide for surgery.<sup>12</sup> The FDG PET imaging is more valuable in patients with elevated and rapidly increasing tumor markers (calcitonine and especially CEA) and points out aggressive disease.<sup>13</sup> F-18 DOPA has higher lesion detection for MTC metastases compared to F-18 FDG.<sup>14</sup>

Theoretically there are no indications for I-131 treatment or diagnostic I-131 imaging due to undifferentiated phenotype of this tumor group.

The disease usually is presented with metastatic lymph nodes in nearly half of the patients and in 10-15% patients distant metastasis may be present at the time of diagnosis usually involvement of lung, liver, bone and brain as multiple organ disease.<sup>15,16</sup> The disadvantage in the detection of MTC metastases is tendency of the small volume of metastatic sites especially in liver which may cause low sensitivity for diagnostic tests.<sup>5</sup> In a previous study 40% of the patients with suspicion of recurrence or metastasis who were referred to FDG PET/CT remain unidentified but these patients were a selected group who do not have any identified tumor by conventional imaging modalities as well.<sup>4</sup> Additionally the sensitivity and mean SUV max values of the lesions decreases for indolent types of MTC like the ones associated with MEN syndromes.<sup>17</sup>

The most important advantage in the follow up of MTC is the presence of informative tumor markers like CEA and calcitonin. The completely normal level of calcitonin is the goal of surgical treatment and those patients are considered surgically cured.<sup>18</sup> Recurrence or metastases may be easily detected by elevation of those markers. Especially calcitonin is the most accurate tumor marker in follow up of MTC.<sup>4</sup> CEA elevation usually represents more aggressive and dedifferentiated type of tumor.<sup>4</sup> The standard surgical approach includes bilateral total thyroidectomy and neck dissection for MTC.<sup>19,20</sup> Elevation of the markers re-

quires further tests in order to detect the site of recurrence. In a multicenter study Diehl et al. have suggested FDG PET because of higher sensitivity compared to Tc-99m V DMSA, Tc-99m sestamibi, In-111 SR scintigraphy and CT and MR.<sup>21</sup> However Ong et al. have observed that the sensitivity may be reasonable when calcitonin level is above 1000 pg/ml while limited while calcitonin level is below 500 pg/ml.<sup>22</sup> However other researchers have suggest that >30 pg/ml levels should be evaluated.<sup>19</sup> In a previous study it has been documented that detection rate will increase in patients with calcitonin and CEA levels higher than 1000 pg/mL and 5 ng/mL respectively and doubling time of <12 months for calcitonin and <24 months for CEA.<sup>23</sup> Additional to indication of residual or metastatic disease elevation of these markers are found to be reflecting the volume of disease.<sup>24,17</sup> The calcitonin levels turns to normal levels after several months from the surgery and those patients with normal calcitonin levels and patients with normal pentagastrin stimulation test are considered to be in complete remission who has 3% risk of recurrence and 97.7% 10 year survival rates.<sup>25,26</sup>

Recently new radiopharmaceuticals and methods are preferred for detection of MTC like Ga-68 labeled peptide imaging. Bogsrud et al. have highlighted that Ga-68 DOTANOC has high sensitivity in biochemically recurrent MTC compared to FDG PET but not as sensitive as it is compared to the other NE tumors.<sup>19</sup> The tumor markers have important role in the follow up of MTC. Calcitonin is more specific marker but CEA might contribute in special circumstances.<sup>27</sup> Additionally short doubling time of these tumor markers might indicate progression.<sup>28</sup> Also there are cut off values for these tumor markers above which might point out positivity might be expected in imaging modalities like FDG PET and FDOPA PET.<sup>29</sup> However there is a study that showed no significant difference between sensitivities of FDG PET studies of patients with calcitonin values higher or lower than 150 pg/ml limits showing a high sensitivity value (93%) for PET.<sup>30</sup> CEA which is considered as another important tumor marker in follow up of MTC patients has some handicaps and questions about its sensi-

tivity and specificity.<sup>31</sup> As it is in our case; there are some false positivity reasons related to CEA but this is the first report showing a false positivity in the literature as far as we know.

Previously Bogsrud et al. have shown that FDG PET might be informative even in case of positive or negative calcitonin levels.<sup>19</sup> It is suggested to evaluate imaging modalities besides calcitonin and CEA levels which cannot replace each other.<sup>32</sup> In our case the imaging revealed no residual tissue but false positive elevation of one of the tumor markers was the problem. There are some false positivity causes of CEA which generally is between the levels of 5-15 ng/mL for detection of colorectal cancer where over 35 ng/mL has reported to be associated with recurrence.<sup>33</sup> Sousa et al. have reported false positive elevation of CEA after bowel cleaning.<sup>34</sup> Previously a physiologically expressed CEA splice variant has been identified.<sup>35</sup> As in our

case it has been previously reported to be another important situation to be remembered in false positive elevation of CEA is uremia and renal failure.<sup>36</sup> Additionally CEA levels might be elevated in several conditions including smoking, pancreatitis, obstruction of biliary system, peptic ulcer and hypothyroidism.<sup>37</sup> The patient was questioned regarding other false positivity reasons and uremia was considered as the only cause.

This case report reminds us to consider the diagnostic markers with caution and in conjunction with each other and diagnostic methods especially FDG PET/CT.

### Conflict of Interest

*Authors declared no conflict of interest or financial support.*

### Authorship Contributions

*All the authors contributed sufficiently to the work.*

## REFERENCES

- Göksu SS, Göksu UA, Gündüz S, Coskun HS. Rising CEA levels in a patient with colon carcinoma: metachronous medullary thyroid cancer. *Int J Biol Markers* 2014;29(2):e184-6.
- Kauhanen S, Schalin-Jääntti C, Seppänen M, Kajander S, Virtanen S, Schildt J, et al. Complementary roles of 18F-DOPA PET/CT and 18F-FDG PET/CT in medullary thyroid cancer. *J Nucl Med* 2011;52(12):1855-63.
- Verbeek HH, Plukker JT, Koopmans KP, de Groot JW, Hofstra RM, Muller Kobold AC, et al. Clinical relevance of 18F-FDG PET and 18F-DOPA PET in recurrent medullary thyroid carcinoma. *J Nucl Med* 2012;53(12):1863-71.
- Treglia G, Villani MF, Giordano A, Rufini V. Detection rate of recurrent medullary thyroid carcinoma using fluorine-18 fluorodeoxyglucose positron emission tomography: a meta-analysis. *Endocrine* 2012;42(3):535-45.
- Rufini V, Castaldi P, Treglia G, Perotti G, Gross MD, Al-Nahas A, et al. Nuclear medicine procedures in the diagnosis and therapy of medullary thyroid carcinoma. *Biomed Pharmacother* 2008;62(3):139-46.
- Adams S, Baum R, Rink T, Schumm-Dräger PM, Usadel KH, Hör G. Limited value of fluorine-18 fluorodeoxyglucose positron emission tomography for the imaging of neuroendocrine tumours. *Eur J Nucl Med* 1998;25(1):79-83.
- Bombardieri E, Maccauro M, Castellani MR, Chiti A, Procopio G, Bajetta E, et al. [Radioisotopic imaging of neuroendocrine tumours. Which radiopharmaceutical and which diagnostic procedure?]. *Minerva Endocrinol* 2001;26(4):197-213.
- Rufini V, Salvatori M, Garganese MC, Di Giuda D, Lodovica Maussier M, Troncone L. Role of nuclear medicine in the diagnosis and therapy of medullary thyroid carcinoma. *Rays* 2000;25(2):273-82.
- Brandt-Mainz K, Müller SP, Görge R, Saller B, Bockisch A. The value of fluorine-18 fluorodeoxyglucose PET in patients with medullary thyroid cancer. *Eur J Nucl Med* 2000;27(5):490-6.
- Grünwald F, Briele B, Biersack HJ. Non-131I-scintigraphy in the treatment and follow-up of thyroid cancer. Single-photon-emitters or FDG-PET? *Q J Nucl Med* 1999;43(3):195-206.
- Salaun PY, Campion L, Bournaud C, Faivre-Chauvet A, Vuille JP, Taieb D, et al. Phase II trial of anticarcinoma embryonic antigen pretargeted radioimmunotherapy in progressive metastatic medullary thyroid carcinoma: biomarker response and survival improvement. *J Nucl Med* 2012;53(8):1185-92.
- Mucha SA, Kunert-Radek J, Pomorski L. Positron emission tomography (18FDG-PET) in the detection of medullary thyroid carcinoma metastases. *Endokrynol Pol* 2006;57(4):452-5.
- Adams S, Baum RP, Hertel A, Schumm-Dräger PM, Usadel KH, Hör G. Metabolic (PET) and receptor (SPET) imaging of well- and less well-differentiated tumours: comparison with the expression of the Ki-67 antigen. *Nucl Med Commun* 1998;19(7):641-7.
- Beuthien-Baumann B, Strumpf A, Zessin J, Bredow J, Kotzerke J. Diagnostic impact of PET with 18F-FDG, 18F-DOPA and 3-O-methyl-6-[18F]fluoro-DOPA in recurrent or metastatic medullary thyroid carcinoma. *Eur J Nucl Med Mol Imaging* 2007;34(10):1604-9.
- Moley JF, DeBenedetti MK. Patterns of nodal metastases in palpable medullary thyroid carcinoma: recommendations for extent of node dissection. *Ann Surg* 1999;229(6):880-7.
- Fialkowski EA, Moley JF. Current approaches to medullary thyroid carcinoma, sporadic and familial. *J Surg Oncol* 2006;15(8):737-47.
- Skoura E, Datsis IE, Rondogianni P, Tsagarakis S, Tzanela M, Skilakaki M, et al. Correlation between Calcitonin Levels and [(18)F]FDG-PET/CT in the Detection of Recurrence in Patients with Sporadic and Hereditary Medullary Thyroid Cancer. *ISRN Endocrinol* 2012;2012:375231.

18. Orlandi F, Caraci P, Mussa A, Saggiorato E, Pancani G, Angeli A. Treatment of medullary thyroid carcinoma: an update. *Endocr Relat Cancer* 2001;8(2):135-47.
19. Bogsrud TV, Hay ID, Karantanis D, Nathan MA, Mullan BP, Wiseman GA, et al. Prognostic value of 18F-fluorodeoxyglucose-positron emission tomography in patients with differentiated thyroid carcinoma and circulating antithyroglobulin autoantibodies. *Nucl Med Commun* 2011;32(4):245-51.
20. Scollo C, Baudin E, Travagli JP, Caillou B, Bellon N, Leboulleux S, et al. Rationale for central and bilateral lymph node dissection in sporadic and hereditary medullary thyroid cancer. *J Clin Endocrinol Metab* 2003;88(5):2070-5.
21. Diehl M, Risse JH, Brandt-Mainz K, Dietlein M, Bohuslavizki KH, Matheja P, et al. Fluorine-18 fluorodeoxyglucose positron emission tomography in medullary thyroid cancer: results of a multicentre study. *Eur J Nucl Med* 2001;28(11):1671-6.
22. Ong SC, Schöder H, Patel SG, Tabangay-Lim IM, Doddamane I, Gönen M, et al. Diagnostic accuracy of 18F-FDG PET in restaging patients with medullary thyroid carcinoma and elevated calcitonin levels. *J Nucl Med* 2007;48(4):501-7.
23. Treglia G, Villani MF, Giordano A, Rufini V. Detection rate of recurrent medullary thyroid carcinoma using fluorine-18 fluorodeoxyglucose positron emission tomography: a meta-analysis. *Endocrine* 2012;42(3):535-45.
24. Kloos RT, Eng C, Evans DB, Francis GL, Gagel RF, Gharib H, et al; American Thyroid Association Guidelines Task Force. Medullary thyroid cancer: management guidelines of the American Thyroid Association. *Thyroid* 2009;19(3):565-612.
25. Franc S, Niccoli-Sire P, Cohen R, Bardet S, Maes B, Murat A, et al; French Medullary Study Group (GETC). Complete surgical lymph node resection does not prevent authentic recurrences of medullary thyroid carcinoma. *Clin Endocrinol (Oxf)* 2001;55(3):403-9.
26. Modigliani E, Cohen R, Campos JM, Conte-Devolx B, Maes B, Boneu A, et al. Prognostic factors for survival and for biochemical cure in medullary thyroid carcinoma: results in 899 patients. The GETC Study Group. *Groupe d'étude des tumeurs à calcitonin. Clin Endocrinol (Oxf)* 1998;48(3):265-73.
27. Kebebew E, Ituarte PH, Siperstein AE, Duh QY, Clark OH. Medullary thyroid carcinoma: clinical characteristics, treatment, prognostic factors, and a comparison of staging systems. *Cancer* 2000;88(5):1139-48.
28. Laure Giraudet A, Al Ghulzan A, Aupérin A, Leboulleux S, Chehboun A, Troalen F, et al. Progression of medullary thyroid carcinoma: assessment with calcitonin and carcinoembryonic antigen doubling times. *Eur J Endocrinol* 2008;158(2):239-46.
29. Koopmans KP, de Groot JW, Plukker JT, de Vries EG, Kema IP, Sluiter WJ, et al. 18F-dihydroxyphenylalanine PET in patients with biochemical evidence of medullary thyroid cancer: relation to tumor differentiation. *J Nucl Med* 2008;49(4):524-31.
30. Ozkan E, Soydal C, Kucuk ON, Ibis E, Erbay G. Impact of <sup>18</sup>F-FDG PET/CT for detecting recurrence of medullary thyroid carcinoma. *Nucl Med Commun* 2011;32(12):1162-8.
31. de Groot JW, Kema IP, Breukelman H, van der Veer E, Wiggers T, Plukker JT, et al. Biochemical markers in the follow-up of medullary thyroid cancer. *Thyroid* 2006;16(11):1163-70.
32. Laure Giraudet A, Al Ghulzan A, Aupérin A, Leboulleux S, Chehboun A, Troalen F, et al. Progression of medullary thyroid carcinoma: assessment with calcitonin and carcinoembryonic antigen doubling times. *Eur J Endocrinol* 2008;158(2):239-46.
33. Litvak A, Cercek A, Segal N, Reidy-Lagunes D, Stadler ZK, Yaeger RD, et al. False-positive elevations of carcinoembryonic antigen in patients with a history of resected colorectal cancer. *J Natl Compr Canc Netw* 2014;12(6):907-13.
34. Sousa RG, Nunes A, Meira T, Carreira O, Pires AM, Freitas J. Colonoscopy and carcinoembryonic antigen variations. *Arq Gastroenterol* 2014;51(1):69-72.
35. Hampton R, Walker M, Marshall J, Juhl H. Differential expression of carcinoembryonic antigen (CEA) splice variants in whole blood of colon cancer patients and healthy volunteers: implication for the detection of circulating colon cancer cells. *Oncogene* 2002;21(51):7817-23.
36. Bertolini L, Meschi M, Detrenis S, Maggiore U, Savazzi G. [Serum concentration of some tumor markers in renal failure]. *Recenti Prog Med* 2005;96(5):221-5.
37. Asad-Ur-Rahman F, Saif MW. Elevated Level of Serum Carcinoembryonic Antigen (CEA) and Search for a Malignancy: A Case Report. *Cureus* 2016;8(6):e648.